

KYOTO UNIVERSITY

2004/2005

FACTS AND FIGURES

CONTENTS

Chronological Outline□	1
Organizations□	3
University Facilities□	5
University Staff and Students□	6
Academic Exchange Memoranda□	7
Researchers From Abroad□	9
Researchers Going Abroad□	10
Students from Abroad□	11
Japanese Nobel Laureates□	12
Kyoto University International Symposia□	12
Campus Map□	13
How to reach Kyoto University□	14

CHRONOLOGICAL OUTLINE

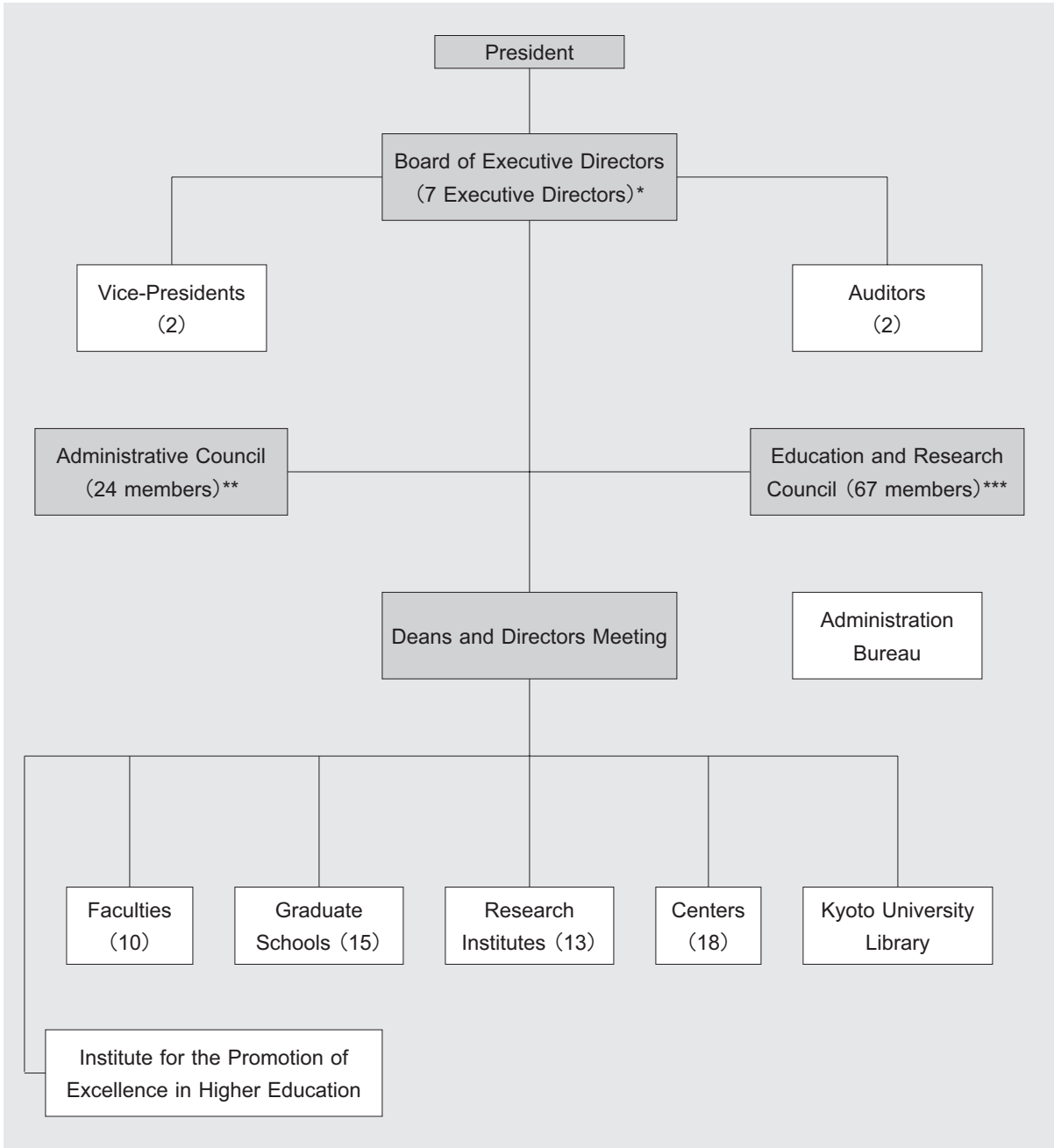
Year	Contents
1897	FOUNDED AS KYOTO IMPERIAL UNIVERSITY. The College of Science and Engineering was established.
1899	Colleges of Law and Medicine were established. The University Library and the University Hospital were established.
1906	The College of Letters was established.
1914	The College of Science and Engineering was divided into two, the College of Science and the College of Engineering.
1919	Colleges were reorganized into five faculties under the new University Ordinance. The Faculty of Economics was established.
1923	The Faculty of Agriculture was established.
1926	The Institute for Chemical Research was established.
1939	The Institute for Research in Humanities was established.
1941	The Chest Disease Research Institute and the Institute of Atomic Energy were established.
1944	The Wood Research Institute was established.
1946	The Research Institute for Food Science was established.
1947	RENAMED KYOTO UNIVERSITY.
1949	Reorganized on the four-year schooling basis (with the exception of six years for medicine) under the new school education system. The Faculty of Education was established. The Branch School was established for general education of the freshmen and sophomores of the faculties.
1951	The Disaster Prevention Research Institute was established.
1953	Graduate courses under the new system were opened. The Yukawa Institute for Theoretical Physics was established.
1954	The Branch School was renamed the College of Liberal Arts and Sciences.
1956	The Institute for Virus Research was established.
1960	The Faculty of Pharmaceutical Sciences was established.
1962	The Institute of Economic Research was established.
1963	The Research Institute for Mathematical Sciences and the Research Reactor Institute were established.
1965	The Center for Southeast Asian Studies was established.
1966	The Center for Student Health was established.
1967	The Primate Research Institute was established.
1969	The Data Processing Center was established.
1971	The Radioisotope Research Center was established.
1972	The Research Center for Sports Science was established.
1975	The College of Medical Technology was established.
1976	The Plasma Physics Laboratory and the Radiation Biology Center were established.
1977	The Environment Preservation Center and the Center for Archaeological Operations were established.
1978	The Educational Center for Information Processing was established.
1980	The Research Center for Biomedical Engineering was established.
1981	The Radio Atmospheric Science Center was established.
1986	The Center for African Area Studies was established.
1988	The Center for Molecular Biology and Genetics was established.
1990	The Center for Student Exchange and the Research Center for Biomedical Engineering were established.
1991	The Graduate School of Human and Environmental Studies, and the Center for Ecological Research were established.



Year	Contents
1992	The College of Liberal Arts and Sciences was reorganized and renamed the Faculty of Integrated Human Studies.
1994	The Research Center for Higher Education was established.
1995	The Venture Business Laboratory was established.
1996	The Graduate School of Energy Science was established. The Institute of Atomic Energy and the Plasma Physics Laboratory were merged into the Institute of Advanced Energy. The Student Counseling Center was established.
1997	The Kyoto University Museum was opened. The Educational Center for Information Processing was reorganized and renamed the Center for Information and Multimedia Studies.
1998	The Graduate School of Asian and African Area Studies and the Graduate School of Informatics were established. The Chest Disease Research Institute and the Research Center for Biomedical Engineering were merged into the Institute for Frontier Medical Sciences.
1999	The Graduate School of Biostudies was established. The Student Counseling Center was reorganized and renamed the Counseling Center.
2000	The Radio Atmospheric Science Center was reorganized and renamed the Radio Science Center for Space and Atmosphere. The University Archives was established.
2001	The International Innovation Center was established. The Research Institute for Food Science was merged into the Graduate School of Agriculture.
2002	The Graduate School of Global Environmental Studies and the Center for Data Collection and Analysis were established. The Center for Data Processing and the Center for Information and Multimedia Studies were merged into the Academic Center for Computing and Multimedia Studies. The Research Center for Low Temperature and Materials Sciences, the Fukui Institute for Fundamental Chemistry were established.
2003	Research Center for Sports Science was closed. Seto Marine Biological Laboratory, University Forests, Subtropical Plant Institute, Fisheries Research Station were merged into the Field Science Education and Research Center. Research Center for Higher Education was reorganized and renamed Center for the Promotion of Excellence in Higher Education. Institute for the Promotion of Excellence in Higher Education and Law School were established. College of Medical Technology was merged into the Graduate School of Medicine.
2004	PARTIALLY PRIVATIZED AS NATIONAL UNIVERSITY CORPORATION.
	Wood Research Institute and Radio Science Center for Space and Atmosphere were unified as the Research Institute for Sustainable Humansphere.
	The Center for Southeast Asian Studies was given to Institute status.
	The Center for Molecular Biology and Genetics was closed.



ORGANIZATION CHARTS



* 6 Executive Directors and one Executive Director who is not a member of Kyoto University Staff. Each of them is in charge of a different decision, one of which is International Affairs.

** 24 members, 12 of whom are faculty and staff of Kyoto University, the rest having no affiliation with the university.

*** 67 members of the faculty and staff of Kyoto University.



ORGANIZATIONS

Faculties (10)	Faculty of Integrated Human Studies
	Faculty of Letters
	Faculty of Education
	Faculty of Law
	Faculty of Economics
	Faculty of Science
	Faculty of Medicine — University Hospital
	Faculty of Pharmaceutical Sciences
	Faculty of Engineering
	Faculty of Agriculture
Graduate Schools (15)	Graduate School of Letters
	Graduate School of Education
	Graduate School of Law
	Graduate School of Economics
	Graduate School of Science
	Graduate School of Medicine
	Graduate School of Pharmaceutical Sciences
	Graduate School of Engineering
	Graduate School of Agriculture — Experimental Farm
	Graduate School of Human and Environmental Studies
	Graduate School of Energy Science
	Graduate School of Asian and African Area Studies
	Graduate School of Informatics
Graduate School of Biostudies	
Graduate School of Global Environmental Studies	
Research Institutes (13)	Institute for Chemical Research
	Institute for Research in Humanities
	Institute for Frontier Medical Sciences
	Institute of Advanced Energy
	Research Institute for Sustainable Humanosphere
	Disaster Prevention Research Institute
	Yukawa Institute for Theoretical Physics
	Institute for Virus Research
	Institute of Economic Research
	Research Institute for Mathematical Sciences
	Research Reactor Institute
	Primate Research Institute
	Center for Southeast Asian Studies
Centers (18)	Academic Center for Computing and Multimedia Studies
	Radiation Biology Center
	Center for Ecological Research
	Radioisotope Research Center
	Environment Preservation Center
	Center for Student Exchange
	Center for the Promotion of Excellence in Higher Education
	The Kyoto University Museum
	International Innovation Center
	Research Center for Low Temperature and Materials Sciences
	Field Science Education and Research Center
	Center for Student Health
	Counseling Center
	Kyoto University Archives
	Center for Archaeological Operations
	Center for African Area Studies
	Center for Data Collection and Analysis
	Fukui Institute for Fundamental Chemistry
Kyoto University Library	
Institute for the Promotion of Excellence in Higher Education	

UNIVERSITY FACILITIES

INTERNATIONAL HOUSES

Kyoto University, in order to contribute to the promotion of international research and educational exchanges, has established "International Houses" as housing facilities for foreign students and researchers.

These International Houses, however, are not simply housing facilities for foreigners; they are also serving as sites for interaction between the foreign students/researchers, university associates and the people of Kyoto.

There are three International Houses in our university; in Shugakuin, Uji, and Ohbaku.

KYOTO UNIVERSITY LIBRARY

The Kyoto University Library was established more than 100 years ago in 1899. The number of books and periodicals has increased year by year, and now numbers 860,000 books and 20,500 periodicals. In addition to the regular types of books and periodicals, it has acquired new publications to keep up with various changes both in academic fields and University organizations, such as e-journals, data base, visual materials (available in the Media Commons), and others. It also offers various library services through the Internet.

(All libraries on campus contain a total of 6,020,000 books and 78,900 periodicals).

UNIVERSITY HOSPITAL

The Kyoto University Hospital was established in 1899 as attached to Kyoto Imperial University. With the incorporation of the Chest Diseases Research Institute in April of 1998, the University Hospital has become a general hospital which covers a large number of medical examinations and treatments, and it offers top-level medical services for the people in and around Kyoto. The current number of beds are 1240, and as of 2003, inpatients are about 354,000 and outpatients about 571,000.

In April 2001, the Translational Research Center was established for fundamental research and its application to human beings. In January 2003, the Post Graduate Clinical Education Center was established where medical trainees are supposed, through the clinical training program, to cultivate themselves, and to deepen their understanding of primary medical care, and to acquire and develop a wholistic attitude towards the examination of their patients.

The hospital began its program of Living-donor liver transplantations in 1990. As of June 2004, Living-donor liver transplantations reached 1,000 cases, setting a world record. About 40% of all the transplantation operations in Japan have been carried out, making Kyoto University Hospital a world leader in this field.



UNIVERSITY STAFF AND STUDENTS

UNIVERSITY STAFF (As of May 1, 2004)

Position	Number
President	1
Board of Executive Directors	7
Vice-Presidents	2
Auditors	2
Professors	989
Associate Professors	800
Lecturers	156
Assistant Professors	1,012
Sub-Total	2,969
Non-teaching Staff	2,333
Total	5,302

ENROLLMENT

(As of each May 1)

Academic Year	Undergraduates	Graduates	Total
2004	13,275	8,828	22,103
2003	13,458	8,331	21,789
2002	13,567	8,246	21,813

College of Medical Technology	Regular Students	Credited Auditors	Total
	358	0	358

Note: College of Medical Technology was merged into the Graduate School of Medicine in 2003.
The present students will continue their studies until graduation.

NUMBER OF GRADUATES

(Academic Years 2001, 2002, 2003)

Academic Year	Undergraduates	Graduates		Total
		Master's Course	Doctoral Course	
2003	3,035	2,038	680	5,753
2002	2,842	2,049	663	5,554
2001	2,912	1,921	626	5,459

NUMBER OF DEGREES CONFERRED

Academic Year	Master's Degree	Doctoral Degree
		New System
2003	2,038	904
2002	2,049	957
2001	1,921	887

Note: Doctoral Degree Old System (1897-1957) Total 9,651

ACADEMIC EXCHANGE MEMORANDA

Kyoto University has concluded the GENERAL MEMORANDA for academic exchange and cooperation with 56 universities, two unions of universities, one consortium of 18 universities and institutes, as indicated below.

(As of June 1, 2004)

Countries	Universities	year of conclusion	☆
Australia	University of Queensland	1981	
	University of Melbourne	1997	☆
	University of New South Wales	1998	☆
	University of Sydney	1999	☆
Austria	University of Vienna	1993	☆
Belgium	Université Catholique de Louvain	1997	☆
Canada	University of Toronto	1991	☆
	La Conférence des Recteurs et des Principaux des Universités du Québec	1994	☆
	University of Waterloo	2003	
China, P. R.	Northwest University (西北大学)	1980	
	Wuhan University (武汉大学)	1980	
	Peking University (北京大学)	1983	
	Tsinghua University (清华大学)	1998	
	Fudan University (复旦大学)	2002	
	Zhejiang University (浙江大学)	2003	
Czech	Charles University	1990	
France	Université de Paris 7	1979	
	Union des Universités de Strasbourg (Strasbourg 1 - Université Louis Pasteur, Strasbourg 2 - Université Marc Bloch, Strasbourg 3 - Université Robert Schuman)	1996	☆
	Le Consortium des universités de Grenoble (Grenoble I - Université Joseph Fourier, Grenoble II - Université Pierre Mendés France, Grenoble III - Université Stendhal and Institut National Polytechnique de Grenoble)	2000	☆
Germany	Free University of Berlin	1984	☆
	Ludwig-Maximilians-University of Munich	1989	☆
	Rhenish Friedrich-Willhelm University of Bonn	1990	☆
	Rupert Charles University of Heidelberg	1990	☆
	Humboldt University Berlin	1998	☆
Israel	Tel Aviv University	1999	
Italy	University of Siena	1989	
	University of Bologna	1995	
	University of Pisa	2001	
Korea, R.	Kyungpook National University (慶北大学校)	1984	☆
	Seoul National University (ソウル大学校)	1991	☆
	Yonsei University (延世大学校)	1998	☆
	Korea University (高麗大学校)	2002	
Laos	National University of Laos	2002	
Mexico	University of Guadalajara	1983	
Netherlands	Leiden University	1997	☆
	University of Utrecht	1997	☆
New Zealand	University of Auckland	1997	☆
Russia	Moscow M. V. Lomonosov State University	1987	

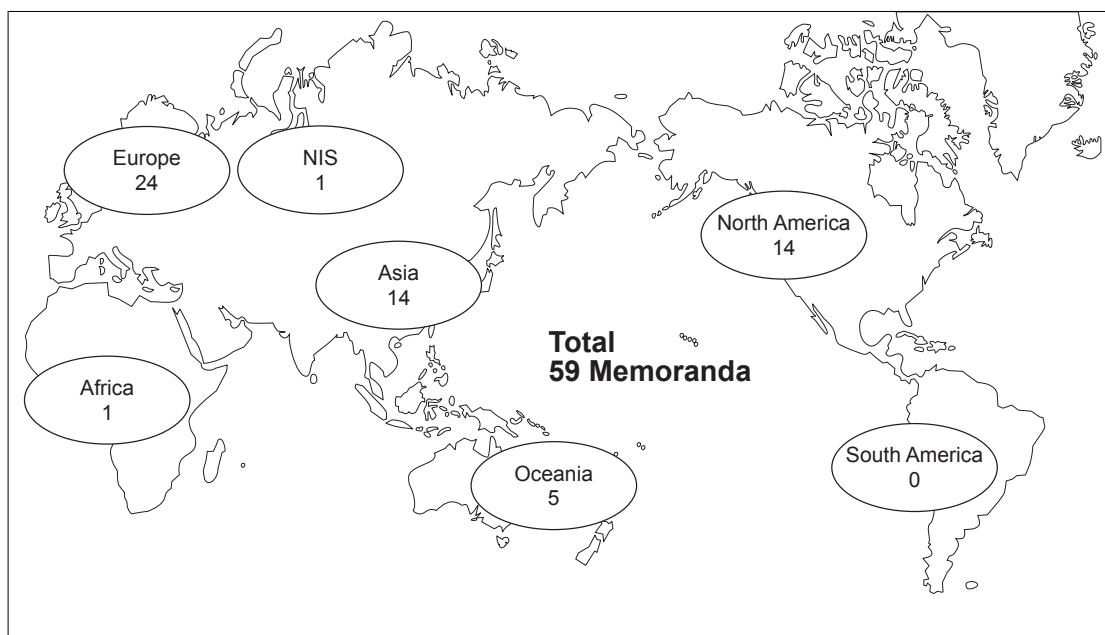


Countries	Universities	year of conclusion	☆
Singapore	National University of Singapore	1999	☆
Sudan	University of Khartoum	2001	
Switzerland	Swiss Federal Institute of Technology Zurich	1989	
	University of Lausanne	1997	☆
Sweden	Stockholm University	1997	☆
	Uppsala University	1997	☆
Thailand	Kasetsart University	1984	☆
U. K.	University of Sussex	1989	
	University of Oxford	1991	
	University of Cambridge	1997	
	University of Nottingham	1999	
U. S. A.	Wayne State University	1985	
	Stanford University	1989	
	University of California	1990	☆
	Polytechnic University	1990	
	Brown University	1992	
	George Washington University	1998	☆
	Tufts University	1998	
	University of Pennsylvania	1999	
	University of Hawai'i	2003	
University of Michigan	2003		

☆Student Exchange Agreement

Individual Faculties, Graduate Schools, Institutes and Centers of Kyoto University have also concluded agreements with more than 200 institutions abroad.

Distribution Map of the Counterpart Universities and Consortia



RESEARCHERS FROM ABROAD

(April 2003–March 2004)

Countries & Regions		Number of Researchers
ASIA	Azerbaijan	1
	Bangladesh	16
	Bhutan	1
	China, P.R.	269
	Hong Kong	1
	India	59
	Indonesia	66
	Iran	5
	Israel	16
	Kazakhstan	1
	Korea, D.P.R.	1
	Korea, R.	240
	Laos	1
	Malaysia	39
	Mongolia	4
	Myanmar	7
	Nepal	3
	Pakistan	5
	Philippines	21
	Saudi Arabia	1
Singapore	9	
Sri Lanka	4	
Taiwan	50	
Thailand	90	
Turkey	8	
Uzbekistan	4	
Vietnam	15	
OCEANIA	Australia	36
	Fiji Islands	1
	New Zealand	8
AFRICA	Congo, D.R.	6
	Egypt	10
	Ethiopia	3
	Gabon	2
	Ghana	2
	Kenya	3
	Nigeria	1
	South Africa	3
	Tanzania	3
	Tunisia	1
Uganda	1	

Countries & Regions		Number of Researchers	
AFRICA	Zambia	3	
	Albania	1	
	Austria	22	
	Belarus	1	
	Belgium	11	
	Bulgaria	7	
	Croatia	4	
	Czech	12	
	Denmark	9	
	Finland	7	
	France	160	
	Germany	166	
	Greece	5	
	Hungary	12	
	Italy	54	
	Lithuania	1	
	Macedonia	1	
EUROPE	Netherlands	37	
	Poland	23	
	Portugal	5	
	Romania	3	
	Russia	100	
	Serbia and Montenegro	1	
	Slovakia	3	
	Spain	30	
	Sweden	26	
	Switzerland	22	
	U.K.	128	
	Ukraine	11	
	NORTH AMERICA	Canada	49
		Costa Rica	3
		Dominica	1
		Guatemala	1
		Mexico	8
SOUTH AMERICA	U.S.A.	523	
	Argentina	4	
	Brazil	5	
	Chile	1	
	Colombia	4	
	Peru	2	
Venezuela	1		
Total		2,484	

The number of researchers from abroad doing research at Kyoto University, irrespective of their length of stay.



RESEARCHERS GOING ABROAD

(April 2003–March 2004)

Countries & Regions		Number of Researchers
ASIA	Armenia	1
	Bangladesh	16
	Bhutan	2
	Brunei Darussalam	2
	Cambodia	14
	China, P.R.	227
	Cyprus	2
	East Timor	3
	Hong Kong	12
	India	55
	Indonesia	149
	Iran	4
	Israel	1
	Kazakhstan	4
	Korea, R.	401
	Laos	29
	Lebanon	1
	Malaysia	98
	Mongolia	13
	Myanmar	17
	Oman	1
	Pakistan	6
	Philippines	54
	Saudi Arabia	4
	Singapore	61
	Sri Lanka	6
	Taiwan	85
	Thailand	266
Turkey	32	
United Arab Emirates	7	
Uzbekistan	4	
Vietnam	42	
OCEANIA	Australia	119
	Fiji Islands	4
	Kiribati	1
	Marshall Islands	2
	New Caledonia	1
	New Zealand	19
AFRICA	Algeria	1
	Botswana	3
	Burkina Faso	3
	Cameroon	2
	Congo	1
	Côte d'Ivoire	3
	Egypt	15
	Ethiopia	11
	Gabon	5
	Ghana	3
	Guinea	3
	Kenya	15
	Madagascar	8

Countries & Regions		Number of Researchers	
AFRICA	Morocco	4	
	Namibia	5	
	Niger	1	
	Rwanda	1	
	Senegal	1	
	South Africa	14	
	Sudan	1	
	Tanzania	17	
	Tunisia	2	
	Zambia	2	
	EUROPE	Austria	76
		Belarus	1
Belgium		27	
Bulgaria		5	
Croatia		1	
Czech		39	
Denmark		18	
Estonia		1	
Finland		19	
France		288	
Germany		270	
Greece		36	
Hungary		18	
Iceland		6	
Ireland		5	
Italy		151	
Latvia		1	
Liechtenstein		3	
Luxembourg		2	
Macedonia		3	
Netherlands		87	
Norway		18	
Poland		19	
Portugal		23	
Romania		7	
Russia		51	
Slovakia		5	
Slovenia		8	
Spain		96	
Sweden		62	
Switzerland		84	
U.K.		185	
Ukraine	3		
NORTH AMERICA	Canada	85	
	Costa Rica	1	
	Mexico	13	
	U.S.A.	1,164	
SOUTH AMERICA	Argentina	3	
	Brazil	16	
	Peru	8	
OTHERS	Antarctic	1	
Total		4,795	

The number of researchers going abroad to do research, irrespective of their length of stay.

STUDENTS FROM ABROAD

(As of May 1, 2004)

Classification	Under graduates	Auditors	Graduates			Research Students etc*	Total
			Master's Course	Doctoral Course	Auditors		
Countries & Regions							
ASIA	Bahrain			1			1
	Bangladesh			1	14	2	17
	Cambodia	2		2	1		5
	China, P.R.	87	2	147	160		94
	Cyprus						2
	Hong Kong	1			1		1
	India				4		1
	Indonesia			5	27		4
	Iran			1	7		2
	Israel			2	4		
	Jordan			1			
	Korea, R.	29	7	34	106	2	22
	Kyrgyz			1			
	Laos			1	1		
	Malaysia	1		3	7		5
	Mongolia	8		6	3		2
	Myanmar			1			1
	Nepal			1	4		
	Pakistan				5		2
	Philippines	1		6	8		2
	Singapore						1
	Sri Lanka	1		1	2		
	Syrian Arab						1
	Taiwan	1		22	28		15
	Thailand	5	1	10	33	1	9
	The West Bank and Gaza Strip				1		
Turkey			1	5		1	
Vietnam	12		6	12		6	
OCEANIA	Australia	1	4	2	2		3
	New Zealand	1			3		
	Tonga				1		
AFRICA	Algeria				2		
	Egypt			1	4		
	Ghana						1
	Kenya				2		1
	Morocco				2		
	Nigeria				1		1
Sudan				2			

Classification	Under graduates	Auditors	Graduates			Research Students etc*	Total
			Master's Course	Doctoral Course	Auditors		
Countries & Regions							
AFRICA	Tanzania				2		2
EUROPE	Austria		1		1		2
	Belarus				1		1
	Belgium				2		2
	Bulgaria	2		2			2
	Czech				1		1
	Denmark						2
	Estonia				1		
	Finland						1
	France		7	3	6	1	3
	Germany		6		4	2	4
	Greece				1		
	Hungary	1	1	1	3		3
	Ireland						1
	Italy						1
	Netherlands		2				1
	Poland			1	2		2
	Portugal		1	1			1
	Romania			2	4		
	Russia			5	2		3
	Serbia and Montenegro						1
	Slovakia				1		1
	Spain			1	1		2
	Sweden		2			2	
	Switzerland		5				2
	U.K.			1	1		3
	Ukraine						1
NORTH AMERICA	Canada		3	3	1		7
	Honduras			2	1		3
	Mexico			1	2		1
	Panama			1			1
	U.S.A.		4	3	7	2	13
SOUTH AMERICA	Argentina	1			1		1
	Bolivia						1
	Brazil			9	9		2
	Chile						1
	Colombia	1			2		3
	Peru			1	1		1
Total	155	46	292	510	10	240	1,253

*Includes Research Fellows

As of May 1, 2004, the number of students from abroad



JAPANESE NOBEL PRIZE LAUREATES

Year conferred	Field	Name	Alma Mater	Position when the prize was conferred
2002	Chemistry	Kouichi Tanaka	Tohoku University	Shimadzu Corporation
	Physics	Masatoshi Koshiha	The University of Tokyo	Emeritus Professor, the University of Tokyo
2001	Chemistry	Ryoji Noyori	Kyoto University	Professor, Nagoya University
2000	Chemistry	Hideki Shirakawa	Tokyo Institute of Technology	Emeritus Professor, University of Tsukuba
1994	Literature	Kenzaburo Oe	The University of Tokyo	Novelist
1987	Physiology-Medicine	Susumu Tonegawa	Kyoto University	Professor, Massachusetts Institute of Technology
1981	Chemistry	Kenichi Fukui	Kyoto University	Professor, Kyoto University
1974	Peace	Eisaku Sato	The University of Tokyo	Former Prime Minister
1973	Physics	Reona Ezaki	The 3rd Higher School/ The University of Tokyo	Senior Researcher, IBM Watson Research Center
1968	Literature	Yasunari Kawabata	The University of Tokyo	Novelist
1965	Physics	Shinichiro Tomonaga	Kyoto University	Professor, Tokyo University of Education
1949	Physics	Hideki Yukawa	Kyoto University	Professor, Kyoto University

Note: Dr. Yukawa of Kyoto University was the first recipient of the Nobel Prize in Japan.

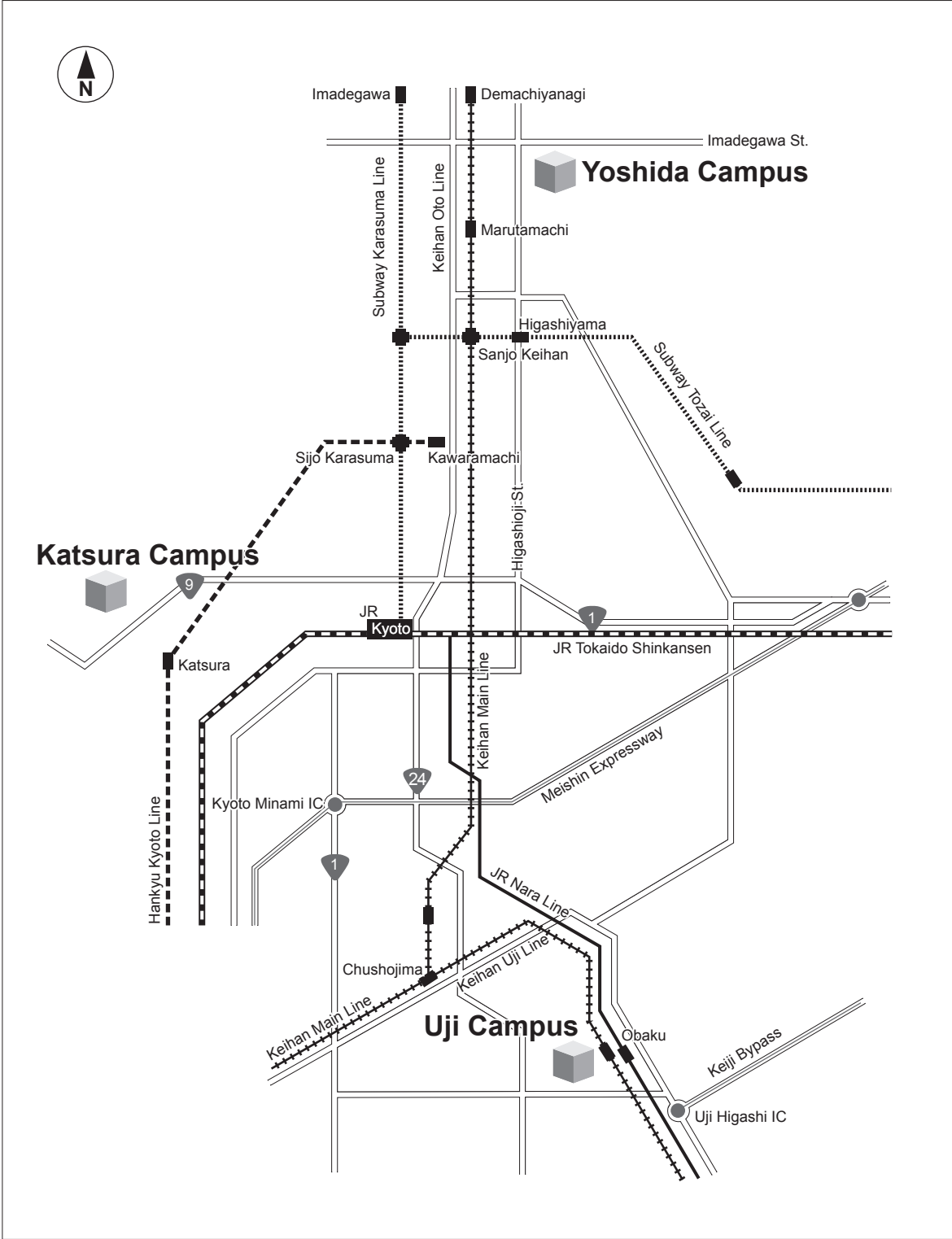
As of May 2004, out of the 12 Nobel Prize laureates, 5 are graduates from Kyoto University.

KYOTO UNIVERSITY INTERNATIONAL SYMPOSIA

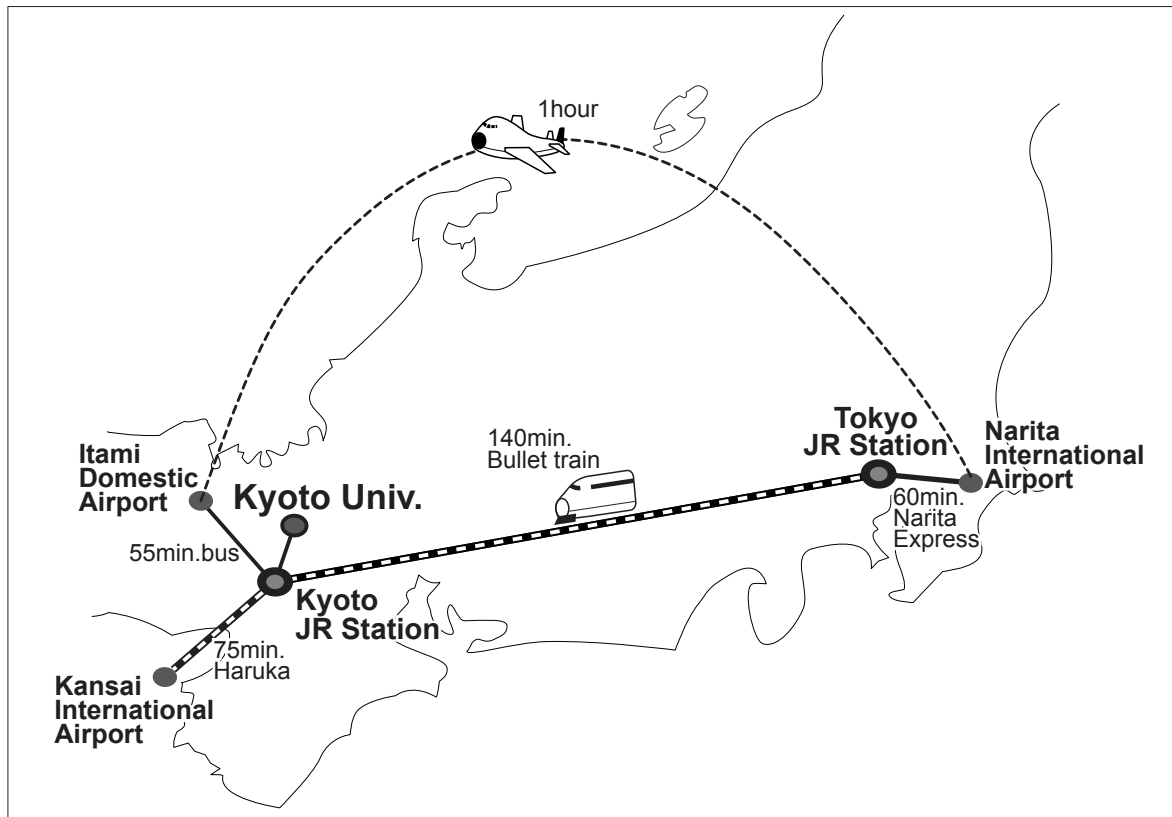
(As of May, 2004)

	Date	Place	Country	Title
1	Jan. 13, 2001	Santa Clara Marriott Hotel	USA	Network and Media Computing
2	Nov. 28, 2001	University of London	UK	The Changes in the Japanese Economy Facing the New Century
	Nov. 30, 2001	University of Edinburgh		
3	Sept. 3-4, 2002	Hotel Inter-Continental Montreal	CANADA	Post-Petrofuels in the 21st Century – Prospects in the Future of Biomass Energy –
4	Dec. 6-7, 2003	University of Michigan	USA	Self, Cognition, and Emotion

CAMPUS MAP



HOW TO REACH KYOTO UNIVERSITY FROM AIRPORTS



From Kansai International Airport

Take the Airport Express “Haruka” train to JR Kyoto Station (75 min., ¥3,500). Take city bus No. 206 and get off at Kyodai-seimon mae bus stop (40 min. ¥220).

For further information on Kansai International Airport:

<http://www.kansai-airport.or.jp/english/access/index.htm>

From Narita International Airport

Take the “Narita Express” train (60 min., ¥3,000) to JR Tokyo Station. Take the Bullet train to JR Kyoto Station, (140 min., ¥14,000).

For further information on Narita International Airport:

http://www.narita-airport.or.jp/airport_e/

For further information on transportation to Kyoto University:

<http://www.kyoto-u.ac.jp/english/etop2/e07-top.htm>





CONTACT

For Researchers

International Affairs Division

Tel: +81-75-753-2047

Fax: +81-75-753-2042

E-mail: koryu52@mail.adm.kyoto-u.ac.jp

URL: <http://www.kyoto-u.ac.jp>

For Students

Foreign Student Division

Tel: +81-75-753-2543

Fax: +81-75-753-2562

E-mail: ryugaku78@mail.adm.kyoto-u.ac.jp

URL: <http://www.kyoto-u.ac.jp>